



4-124DST DST Concealed Hinge Pr03 130°



Advantages

- For surface mounted doors.
- Hinge concealed.
- Bending 23mm.
- RH / LH application.
- 130° Opening angle.
- Tool-less installation of frame-part.
- The captive pin is pre-assembled.
- The pin engages to the wire springs at the frame-part and so it is captive.
- By pulling the pin the hinge can be removed.
- Door-part adjustable ± 5 mm.
- IP65 according to DIN EN 60529.

Materials

- **Frame-part:** zinc die, untreated
- **Door-part and pin:** steel, zinc plated
- **Snap wedges:** sintered metal, coated
- **O-ring:** NBR
- **Bearing bushings:** POM

Remarks

1. door notch
2. weld stud M8x15
3. bearing bushings



Hinge option 1: door LH, pin top, door RH, pin bottom

| Part Number | Clamping range (S) | Installation type |
|-------------------|--------------------|----------------------|
| 443-9001.00-10015 | 1.2 - 1.7 mm | tool-less / screw-on |
| 443-9001.00-10020 | 1.7 - 2.2 mm | tool-less / screw-on |
| 443-9001.00-10025 | 2.2 - 2.7 mm | tool-less / screw-on |
| 443-9001.00-10030 | 2.7 - 3.2 mm | tool-less / screw-on |
| 443-9001.00-10033 | 3.0 - 3.5 mm | tool-less / screw-on |

Hinge option 2: door RH, pin top, door LH, pin bottom

| Part Number | Clamping range (S) | Installation type |
|-------------------|--------------------|----------------------|
| 443-9001.00-20015 | 1.2 - 1.7 mm | tool-less / screw-on |
| 443-9001.00-20020 | 1.7 - 2.2 mm | tool-less / screw-on |
| 443-9001.00-20025 | 2.2 - 2.7 mm | tool-less / screw-on |
| 443-9001.00-20030 | 2.7 - 3.2 mm | tool-less / screw-on |
| 443-9001.00-20033 | 3.0 - 3.5 mm | tool-less / screw-on |



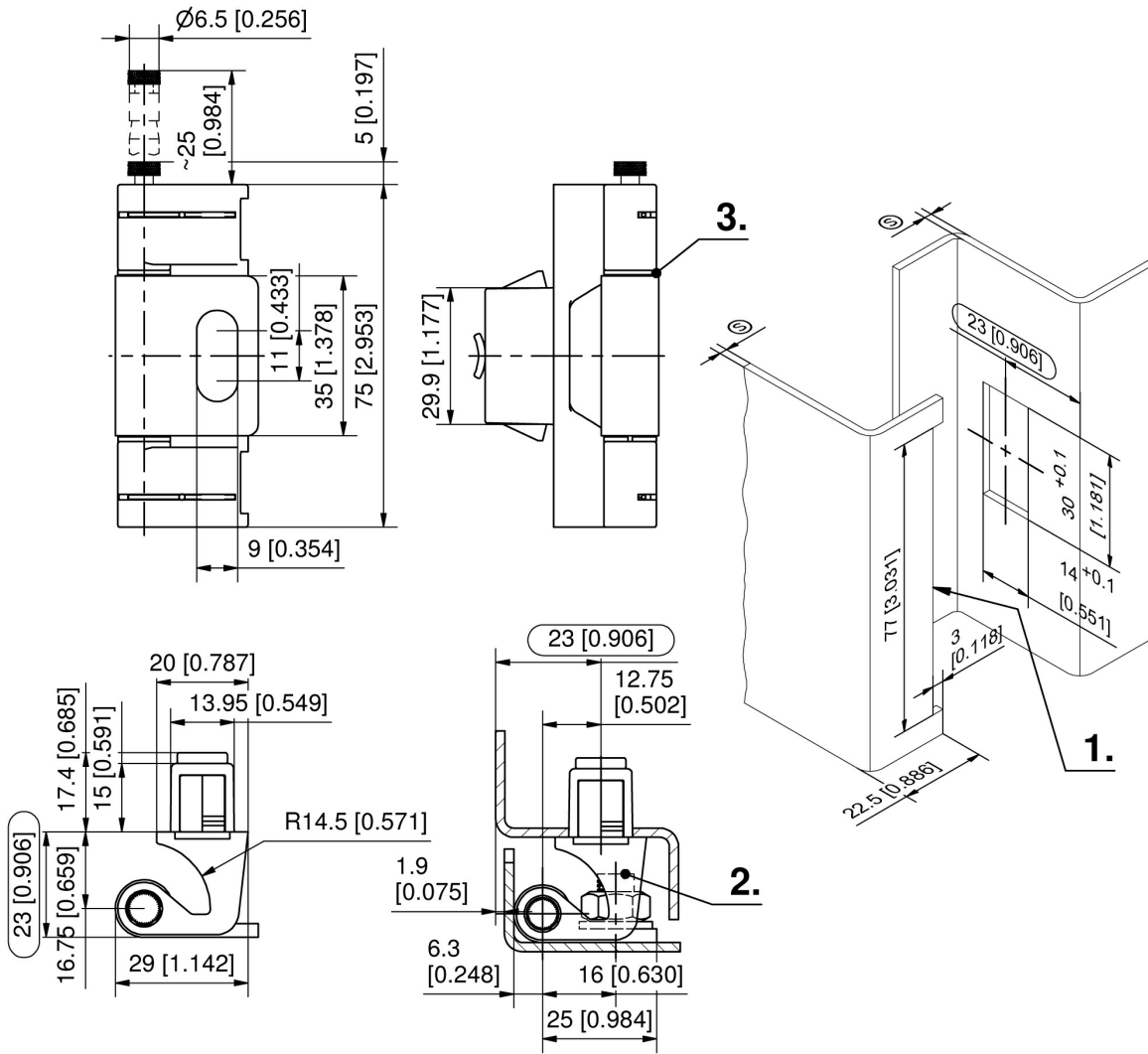
Accessories

292-0701.15-01530 **Reinforcement plate for cutout**

292-0402.00-03014 **Cutout-cover**

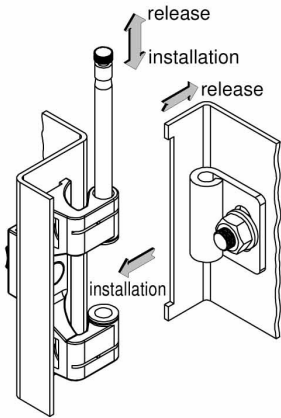
292-0301.15-00000 **Tool for uninstallation**

292-0306.80-02530 **Tool for uninstallation**

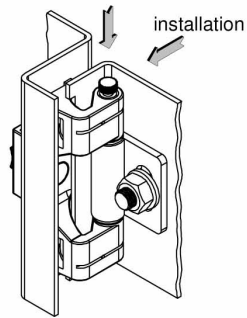


Examples of installation situations

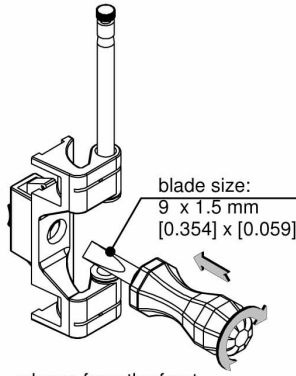




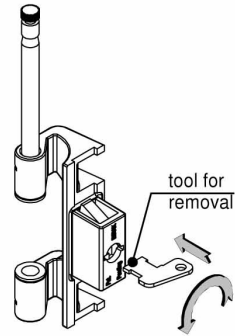
To remove the door, pull the pin till it latches in the **captive** end position.



Insert the pin when mounting the door. The pin latches in the end position.



release from the front
(remove black plug)



release from the rear
(remove red plug)